



PRE-MANUFACTURED RECREATIONAL CABINS

www.northwoodscabinco.com

15339 Kinsman Rd, Middlefield OH 44062

(216)-538-1635

- OUR COMPANY -



Northwoods Cabin Company was born from a passion for the great outdoors and a rich background in woodworking and construction. Keith Lynce launched the company in 2019 after realizing he could use his decades of experience as an arborist and carpenter to help people forge a stronger connection with nature. His wife and business partner, Danialle, left behind a long career in the corporate world to share in her husband's vision. This shared passion and appreciation for the natural world translates to a level of craftsmanship, care and integrity rarely found in the world today. As a family-owned and -operated business, we take pride in supporting our local community and giving our customers a special place to make memories with the ones they love.

Whether you're looking for a private escape in your own backyard under one of our Timber Frame Pavilions or you want to make the most out of your property with your very own Recreational Log Cabin, you'll find what you're looking for at Northwoods Cabin Co.



- CONTACT -

info@northwoodscabinco.com
 15339 Kinsman Rd.
 Middlefield, OH 44062
 216-538-1635



- OUR PROMISE -

Quality is the heartwood of everything we do.

When we set out to create Northwoods Cabin Company, we made a pledge to ourselves and our customers to deliver only the highest quality products. Our recreational log cabins undergo rigorous quality assurance inspections throughout the manufacturing process and before they leave the workshop, but the roots of our commitment to quality go much deeper.

You won't find any robots or assembly lines in our shop. Every piece of locally-sourced Eastern White Pine used in our structures passes through our hands multiple times. Combining traditional techniques and modern innovation allows us to offer our customers, whether private or commercial, structures that stand the test of time, in terms of both durability and aesthetics.



Cabin under construction



The lumber mill



The workshop

- Made in the USA
- Handcrafted quality
- Locally sourced



FIND US
ONLINE!





14x40 Northwoods Cabin



- NORTHWOODS CABIN SERIES -



14x32' Northwoods Cabin

Our Northwoods Cabin Series is the most impressive pre-manufactured recreational cabin on the market today. With a height of over 16', we tower over any competition. Stunning inside and out, this cabin has plenty of living and relaxing space with two lofts and abundant open floor space. Larger models include a bedroom with a surprisingly sizable closet, a full bath with a standing shower, and enough extra space to sleep up to 11 people. With this grand cabin, you can bring the whole family on the adventure and sleep comfortably every night.

Our unique hinged roof system allows the cabin to be transported over-the-road without exceeding height restrictions. Once on-site, our crew opens the cabin up, installs the gable ends, ridge beam, interior railings (and more), and just like that your new cabin is ready to be enjoyed in any season! (Sizes reflect roofline measurement.)



14x40'



14x40'



14x40'



14x40'

- FEATURES -

Full Amenities Features

- Two full standing-height lofts
 - Main loft area with stair access
 - Large bonus loft over porch
 - Log ladder for front loft access
- Hidden storage under stair treads
- 6' or 8' deep covered porch
- Spacious closets/pantry
- Full glass 36" entry door



Northwoods Cabin walkthrough video.

Optional Upgrades

- Full Cabin Upgrade (front loft not included)
- Add front loft to Full Cabin Upgrade
- Side Porch Upgrade
- Catwalk connecting lofts
- Off-Grid Upgrades (pg. 9-10)

Get lost in the Northwoods

Size
14x24' Cabin
14x40' Cabin
14x40' Cabin w/ Side Porch
16x24' Cabin
16x40' Cabin
16x40' Cabin w/ Side Porch



16x40' Northwoods Cabin w/ Side Porch

- TRAPPER CABIN SERIES -



14x24' Trapper Cabin

Our entry level Trapper Cabin Series is the perfect structure for those who seek the Real Log Cabin feel. They invite you to sit and stay awhile in a quality made cabin that will last for years to come.

This cozy cabin exudes charm and tradition. Perfect as a bunk house, a casual hunting camp, or a private retreat, the Trapper Cabin Series is a versatile model. It has all the allure of a traditional cabin, with a clean look and unbeatable quality construction. This model is popular with campgrounds wishing to offer their clients rustic accommodations and private owners looking for the perfect secluded hideaway. Larger models have room enough for a full bath, bedroom, and kitchen, creating an upscale, comfortable environment. Add a few rockers to the front porch, grab your drink of choice, and unwind at the end of every day in this dream-come-true cabin. *(Sizes reflect roofline measurement.)*



14x24'



16x32'



14x24'

- FEATURES -

Full Amenities Features

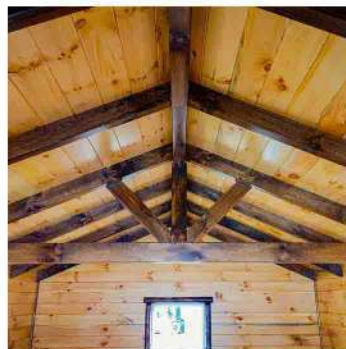
- Loft space over entrance
- 6' or 8' deep covered porch
- Half glass 36" entry door
- Partition walls in large models

Optional Upgrades

- Full Cabin Upgrade (front loft not included)
- Off-Grid Upgrades (pg. 9-10)

Celebrate tradition in the Trapper

Size
12x16' Cabin
14x24' Cabin
14x32' Cabin
16x24' Cabin
16x40' Cabin



16x32'



- FIRESIDE CABIN SERIES -



16x32' Fireside Cabin

Our Fireside Cabin Series is a perfect blend between our Trapper Cabin Series and the Northwoods Cabin Series. This ranch-style cabin features a double crow's nest dormer, creating a great space for the kids to hang out, added storage space or extra bunk space. With an open, welcoming floor plan, you can create your dream living environment.

This darling cabin features a warm, inviting interior with plenty of windows to let in the light. The double crow's nest dormers deviate from the traditional cabin models and create a charming, modern look inside and out. Cathedral ceilings in the bedroom and living area create height that belies the small footprint of the cabin. When it comes to interior storage, this cabin beats them all with two closets and a large loft area above the kitchen. As our only cabin featuring a side entrance, adding a porch off the main entrance enhances the welcome factor even more.



16x32'



16x32'



16x32'

- FEATURES -

Find adventure in the Fireside Cabin



Size
16x32' Cabin*

Full Amenities Features

- Large crow's nest dormer loft
- Transom windows
- Spacious closets/pantry
- Interior dividing walls
- Master bedroom
- Vaulted living room ceiling
- Full glass 36" entry door

Optional Upgrades

- 8' Covered front porch
- Off-Grid Upgrades (pg. 9-10)

*Available in one size only
Size indicates roofline measurement.

- THE ALLEGANY -

Available spring of 2026 — The Allegany is our all-new park model cabin, offering the level of quality real-log craftsmanship you expect with the convenience of a park model design. Engineered on a mobile trailer frame, these units combine comfort and flexibility, often making permitting and placement easier than traditional builds. Perfect for campgrounds, extended guest stays, or seasonal living. Visit www.northwoodscabinco.com for more details.



14x40' Allegany Park Model Cabin**



- FEATURES -

Size
14x40' Cabin*

Full Amenities Package
Turkey Package

**Available in one size only
Size indicates roofline measurement.*

Optional Upgrades

- Composite decking
- Built-in log furniture
- Kitchen appliances
- Off-Grid Upgrades

Get away in The Allegany



GROUND FLOOR PLAN



LOFT FLOOR PLAN



- PRIMITIVE vs FULL AMENITIES -



PRIMITIVE

A finished cabin inside & out with windows and doors installed, but no interior partition walls, electric or plumbing. Rustic and traditional.

< 14x24' Primitive Trapper Cabin

FULL AMENITIES

A completely finished and “move-in” ready interior. Includes 3/4 bath & kitchenette, electrical, plumbing, interior walls, cabinets, closets, and more.

14x40' Full Amenities Northwoods >



- WHAT'S INCLUDED -

 *All of our cabins come with:*

- **Multilayer Floors:** Exterior-grade plywood, foam insulation and interior-grade plywood topped with real wood tongue & groove flooring, all supported by sturdy treated 4x6” floor joists.
- **Solid Log Walls:** Real 4x6” tongue & groove D-shaped logs—no log-look siding.
 - **Stained Trim:** Beautiful stained trim around windows and doors.
- **Windows & Doors:** Double-paned windows and fiberglass entry door with window.
 - **Vaulted Ceilings:** Open & airy vaulted ceilings with exposed truss webs.
 - **Roof:** 40-year metal roof in your choice of color.
 - **Exterior stain:** Your choice of 9 premium exterior stain colors.

 *Our Full Amenities models also include:*

- **Everything in Primitive models PLUS:**
- **Kitchenette:** Pine cabinets, stainless steel sink, Formica laminate countertops, faucet with sprayer, space for microwave & fridge, GFCI outlets.
- **Bathroom:** Traditional porcelain toilet, shower designed for tall users, pine vanity, stainless steel sink, ventilation fan/lights, extra storage space.
 - **Interior walls:** 2x4” studs wrapped in 1x8” tongue & groove pine panelling.
 - **Interior doors:** Solid wood barn-style or swinging doors (where applicable).
 - **Lighting:** LED lighting throughout interior plus exterior porch light.
 - **Electrical:** Hidden electric panel, plenty of outlets, and exterior GFCI outlet.
 - **Plumbing:** PEX water lines, PVC drains, electric hot water tank, shutoff valves at fixtures, ½-inch PEX inlet/drain lines, and blowouts for easy winterization.
 - **Utilities:** ½-inch PEX water supply line, PVC drains below fixtures, and an accessible under-cabin chase for the electric panel.

- ROOF COLORS -

Our 40-year metal roofing is available in 18+ vibrant, long-lasting colors, providing both durable protection and a striking finish on any of our cabins.



Slate



Brite White



Burgundy



Charcoal



Beige



Ivy



Ocean Blue



Brown



Heron Blue



Ash Gray



Black



Bronze



Tan



Red



Clay



Light Stone



Patina Green



*Crimson Red

- EXTERIOR STAIN -

We offer 9 shades of high-performance exterior stains, combining rich, lasting color with advanced protection against fading, moisture, and daily weathering for a beautiful, durable finish.



Caramel



Oak



Almond



Cedar



Bronze



Chestnut



Smoke



Eucalyptus



Rustic Grey

- LAMINATE OPTIONS -

Our premium laminate countertops offer the high-definition realism of natural materials paired with advanced performance technology for superior resistance to scratches, scuffs, and daily wear.



Toffee Di Pesco



Lakeshore



Black Alicante



Bianco Romano



Typhoon Gold

- OFF GRID OPTIONS -



Solar Power
Chimney Kit
Off-Grid Toilets
Water Storage System
Generator Backup

WOOD HEAT

Our Woodstove Rough-in Package includes:

- Rough-in stovepipe*
- Through-the-roof chimney box
- Connector for stove pipe to chimney box
- Double-wall exterior chimney pipe
- Exterior roof flange
- Chimney cap

*6" or 8" chimney pipe/flue size depending on stove.

Customer provides woodstove, heat-proof floor pad, and pipe connecting woodstove to chimney box connector.



GENERATOR

Our Generator Ready Package includes:

- 30 Amp capacity / 220 Volt input
- Weatherproof exterior inlet
- Hardwired to main breaker panel
- Solar-ready for hybrid battery use
(Solar Package required for solar setup)
- Reliable plug-and-play backup power

WASTE MANAGEMENT

No sewer or septic at your off-grid site?
No problem! We offer sustainable,
environmentally-friendly waste
management options perfectly suited
to your off-grid escape.

INCINOLET
ELECTRIC INCINERATING TOILET



Incinerating toilets heat waste to turn it into sterile ash, which can be added to compost or used as fertilizer in the garden. Requires a 110V or 220V electrical hookup and exhaust vent.

NATURE'S HEAD
Self-Contained Composting Toilet



Lightweight, odorless and compact, composting toilets divert liquid waste while allowing solid waste to break down into rich, useful compost.

WATER STORAGE

Our off-grid water storage system includes a 100 gal. storage tank and on-demand water pump. The tank can be neatly tucked away in a closet, and is easy to fill using a water bladder, garden hose and hand drill-powered pump.

Note: Grey water from sinks/showers can be safely reused for irrigation or landscaping. Proper filtration and **local regulations** must be followed to prevent contamination. Managing grey water responsibly helps conserve water and supports sustainable off-grid living.

- SOLAR POWER PACKAGES -

What's Included in Every System

- **Energy Inverter/Charger** – High-efficiency design (up to 96%) with PowerAssist to boost generator input when needed.
- **EG4 Lithium LiFePO₄ Battery Bank** – UL-rated, long-life lithium power storage with built-in protection and monitoring.
- **440W All-Black Solar Panels** – Durable monocrystalline panels with 20%+ efficiency, engineered in the USA.
- **Generator Integration** – Built-in transfer switch allows for automatic backup when solar power is low.
- **Smart Monitoring** – Remote system visibility via VictronConnect and VRM portals.
- **Expandable Design** – All systems are modular for future upgrades or added capacity.
- **Self-Sufficiency** – Free yourself from reliance on the traditional power grid!



CHOOSE YOUR POWER PACKAGE

3kVA Off-Grid Power System

- **Ideal for:** Small cabins, weekend getaways, or light off-grid use.
- 2.4kW continuous / 5.5kW surge
- 48V 5.12 kWh LiFePO₄ battery bank
- MPPT SmartSolar charge controller (35A)
- 2 x 440W PV panels (expandable)

Contact us for pricing at info@northwoodscabinco.com

6kVA Off-Grid Power System

- **Ideal for:** Larger or seasonal-stay cabins with greater power needs.
- 240V Dual 3kVA inverters (6kVA total, 12kVA surge)
- 48V 15.36 kWh LiFePO₄ battery rack system
- Dual 150/250V SmartSolar charge controllers
- PowerAssist for heavy loads
- 4 x 440W PV panels (expandable)

10kVA Off-Grid Power System

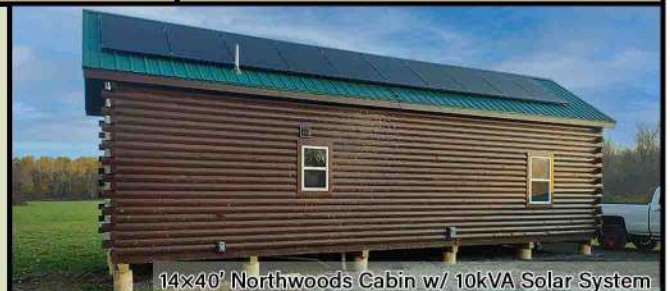
- **Ideal for:** Large cabins with multi-appliance setups.
- Preconfigured for 120/240V split phase output
- 10kVA cont. / 20kVA peak
- 48V 100Ah LiFePO₄ battery rack system (expandable)
- Dual MPPT SmartSolar charge controllers (up to 8kW solar input)
- 10 x 440W PV panels (expandable)

OPTIONAL ADD-ONS

- Additional solar panels
- Battery upgrades (extra 5.12 kWh modules)
- Generator integration kits
- Remote monitoring display
- Honda EU2200i generator (or similar)



Solar Cabin Setup Walkthrough Video



14x40' Northwoods Cabin w/ 10kVA Solar System

- COMPLIANCE & FAQ -

Owning a recreational log cabin comes with important responsibilities to ensure safety, longevity, and compliance. Beyond regular maintenance and care, owners are responsible for preparing the site, securing any necessary permits, following local building codes, and insuring their cabin. Please read this section carefully, and refer to our website for more details.

• CAN I LIVE IN IT?

Our cabins are rated for recreational use only. It is up to you to check with your local building or zoning department and to obtain any and all permits. In most locations, our cabins do not qualify as a full-time residence.

• HOW MUCH DOES IT COST?

We offer a wide range of sizes, styles and floorplans, assuring we have a model for just about every budget. Customized cabins and features are quoted per cabin. You can find our most current price list for each cabin on our website at www.northwoodscabinco.com.

• DO I NEED A PERMIT?

Most likely. Regulations vary widely from town to town. Be sure to check with your local building or zoning department to determine the requirements in your area.

• DO YOU DELIVER?

Yes! Our cabins are pre-manufactured and ship over-the-road fully constructed. We deliver to most states in the continental US (excludes delivery through New York).

• HOW MUCH IS DELIVERY?

Delivery price depends on location and site conditions. Our cabins are considered an “oversized load” and require special permits and state-dictated routes. We’re happy to provide estimated shipping costs when the time is right.

• HOW LONG DOES IT TAKE TO BUILD?

Our build times typically vary between 4 to 8 months depending on volume, size and complexity.

• HOW LONG DOES SETUP TAKE?

Typically, we set up the cabin in 6 to 8 hours. Of course, the weather and conditions at the site can impact the time it takes to get everything set up and ready to go.

• WHAT KIND OF FOUNDATION?

You can set our cabins on a cement pier foundation, a full basement or a crawl space. Primitive models without interior plumbing can sit on a concrete slab, and in rare cases, a compacted gravel pad may suffice. See page 12 for details.

• HOW IS THE CABIN HEATED?

Many customers have us install a chimney kit and will put in a woodstove. See page 9 for more info on our Off-Grid Upgrades. We can also run electric for a mini-split unit or even install baseboard heating. Our cabins have an insulation factor of R8.

• DO YOU HAVE GOOD REVIEWS?

Yes, we do! You can look us up on Google or visit our Facebook page to read reviews from real customers. Many owners share photos, stories, and experiences that highlight the quality and longevity of our cabins, helping you feel confident in your decision.

You can find more answers to Frequently Asked Questions on the cabin pages of our website.
www.northwoodscabinco.com

- MAINTENANCE -

Inspect & Seal: Walk the perimeter each year and check the chinking and caulk. Touch up any cracks or gaps to keep out moisture and pests.

Clean Exterior Logs: Gently clean exterior logs to remove pollen, dust, and debris that can trap moisture and degrade stain.

Trim Vegetation: Keep shrubs and tree branches at least 2–3ft from walls to promote airflow and reduce the risk of rot.

Splash Zone Inspection: Check the bottom two rows of logs for mud splashes. If present, clean them and add gravel or diverters to the ground to prevent future splash-back rot.

Pest Protection: When staining, add NBS30 “No Bug Stuff” from Outlast to deter carpenter bees and other boring insects, preserving both wood and finish (available on our website).

WINTERIZING YOUR CABIN

- **Drain the Water System:** Open the dedicated low-point water drain lines. These allow gravity to clear the majority of water from your plumbing system immediately.
- **Blow Out the Lines:** Connect an air compressor to the built-in blowout valves. This is a critical step that forces compressed air through the pipes, ejecting any remaining pockets of water that gravity missed and ensuring the lines are completely dry.
- **Protect the Traps:** Pour RV antifreeze (non-toxic pink antifreeze) into all sink drains, shower drains, and toilet bowls. This displaces water in the P-traps, preventing the seals from freezing and cracking.

- FOUNDATIONS -

All of our recreational log cabins must be installed on a properly prepared foundation. **The foundation must be fully prepared by the owner prior to delivery.** Foundation selection should be based on cabin size, site conditions, local code requirements, and whether plumbing or utilities will be installed. Proper drainage, frost protection, and long-term structural stability are critical considerations regardless of foundation type.

Several foundation options are compatible with our cabins, each offering distinct advantages. While cement pier foundations are the most common due to their flexibility and cost-efficiency, crawl spaces, full basements, or in some cases a concrete slab or compacted gravel pad may also be appropriate depending on the cabin model and intended use. Pier systems, concrete runners, or reinforced slabs may be required for park model cabins. *Always confirm local zoning and permitting requirements before construction.*



**CEMENT PIER • CRAWL SPACE
FULL BASEMENT • CONCRETE SLAB
COMPACTED GRAVEL PAD**

- TRANSPORT & DELIVERY -



Delivering a cabin is a complex process that begins with the customer's responsibility for thorough site preparation. This includes obtaining all necessary local building permits, installing a finished foundation, and ensuring the site—including the driveway—is firm, clear of low-hanging branches or utility wires, and accessible for a large semi-truck. Our cabins are fully constructed oversized loads, requiring special state permits and escort vehicles.

Our two-story Northwoods models feature a hinged roof that gets folded down during transport to meet height restrictions. Once on site, a specialized crew uses dedicated equipment, often called "mules," to maneuver and secure the cabin onto the prepared foundation. Setup typically takes 6 to 8 hours, including raising and finishing any folded components like the roof assembly. Cabins with a side porch upgrade may require an extra day to complete construction of the porch. A final walkthrough ensures all windows and doors operate correctly.

If your cabin includes plumbing or electrical wiring, a qualified contractor may make the necessary connections after delivery. Cranes can also be used for placement when needed; while watching a cabin being lifted can be dramatic, our operators are highly skilled and the equipment is extraordinary. Every delivery is unique. You can see videos showcasing past installations on our YouTube and Facebook.



14x40' Northwoods Cabin delivery video.



- LOG FURNITURE -

Complete your cozy cabin getaway with authentic handcrafted log furniture in every room.

We're proud to work with local artisans to offer a wide range of beautiful handcrafted log furniture pieces. Created with care from long-lasting and durable cedar logs, these pieces are specially designed to complement our cabins. We'll help you curate a package to perfectly fit your space. Coming spring of 2026.

Available in several different finishes, including stylish flame-charred. Visit our website at www.northwoodscabinco.com to see the full range of log furniture with pricing.



**TABLES • CHAIRS • BEDROOM SETS
DRESSERS • MIRRORS • BOOKCASES • STOOLS
TWIN / QUEEN / KING BED FRAMES
TWIN / TWIN OR TWIN / QUEEN BUNK BEDS
OUTDOOR FURNITURE**

*And so
much
more...*



Visit our website to view the complete collection.
www.northwoodscabinco.com

- TIMBER FRAME PAVILIONS -

Made from the same locally-sourced Eastern White Pine as our cabins and available in four breathtaking styles, our pavilion kits are designed to be easy to install while offering the level of quality and durability you've come to expect.

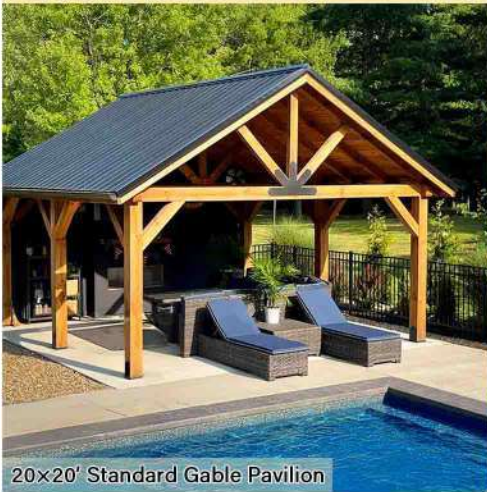
We offer nationwide shipping on our pavilion kits and work with an ever-growing list of installers. Download our pavilion catalog with details and pricing at www.northwoodscabinco.com.

**GABLE • HIP • SINGLE SLOPE
HEAVY TIMBER GABLE**

*Expand your outdoor living space
and elevate your property!*



20x18' Standard Gable Pavilion



20x20' Standard Gable Pavilion



12x12' Hip Roof Pavilion



16x24' Single Slope Pavilion

- OUTDOOR STRUCTURES -

**BARN • COOPS • LIVESTOCK SHELTERS
GREENHOUSES • GARDEN SHEDS
STORAGE BUILDINGS • POOL HOUSES
& MORE!**



Log Cabins & Timber Frame Pavilions available nationwide. Outbuildings & Livestock Shelters available in the Northeast Ohio area only. Pricing does not include delivery.



www.northwoodscabinco.com
15339 Kinsman Rd., Middlefield, OH 44062
440-666-6229



14x40' Northwoods Cabin

CABIN SIZES & PRICING

◀ The Northwoods

Size	Primitive	Full Amenities
14x24' Cabin	\$31,366	\$48,173
14x40' Cabin	\$51,120	\$78,604
14x40' Cabin w/ Side Porch	Not available	\$87,134
16x24' Cabin	\$35,879	\$54,117
16x40' Cabin	\$58,425	\$84,230
16x40' Cabin w/ Side Porch	Not available	\$94,474

The Trapper ▶

Size	Primitive	Full Amenities
12x16' Cabin	\$16,951	Not available
14x24' Cabin	\$23,525	\$36,685
14x32' Cabin	\$31,442	\$48,612
16x24' Cabin	\$26,571	\$42,160
16x40' Cabin	\$43,562	\$64,702



14x24' Trapper Cabin



16x32' Fireside Cabin

◀ The Fireside

Size	Primitive	Full Amenities
16x32' Cabin	\$41,893	\$62,559

**NEW
FOR 2026!**

The Allegany ▶

Size	Full Amenities	Turnkey
14x40' Park Model	\$109,995	\$129,995



14x40' Allegany Park Model



Follow our Facebook to see new images and updates.

Our cabins are designed for recreational use only. It is the owner's responsibility to obtain all permits and prepare the site. Please refer to our full cabin catalog for more info at www.northwoodscabinco.com, or email us at info@northwoodscabinco.com. Ph: 216-538-1635

Effective as of 01/01/2026. Pricing subject to change without notice. Tax & delivery not included.